

PanelView Plus 6 Specifications

Catalog Numbers 2711P, 2711PC

Topic	Page
Environmental Specifications	2
Certifications	3
PanelView Plus 6 - 700 to 1500 Terminals	4
PanelView Plus 6 - 400 and 600 Terminals	7
PanelView Plus 6 Compact Terminals	10
External Power Supply	12
HMI Software	14
Communication Cables	15
Migration Hardware	17
Additional Resources	18

PanelView™ Plus 6 HMI terminals are used for applications with a need to monitor, control, and display information graphically, allowing operators to quickly understand the status of their application. All PanelView Plus 6 applications are programmed with FactoryTalk® View Studio for Machine Edition (ME) software and have FactoryTalk View ME Station (runtime) software installed on each terminal.

This family provides a broad range of rugged terminals offering these features:

- Premier integration with the Integrated Architecture™ platform
- Scalable 4- to 15-inch displays with touch screen, keypad, or both for input
- Common development software
- Real-time monitoring of a terminal's displays via a web browser (7- to 15-inch displays)

Use this document along with the Visualization Solutions Selection Guide, publication [VIEW-SG001](#), to make decisions on the visualization solutions best suited for your system requirements.



Environmental Specifications

The environmental certifications in Table 1 apply to these PanelView Plus 6 terminals:

- PanelView Plus 6 - 700 to 1500 terminals including logic, communication modules, and display modules
- PanelView Plus 6 - 400 and 600 terminals
- PanelView Plus 6 Compact 400 and 600 terminals

Table 1 - Environmental Specifications - PanelView Plus 6 Terminals

Attribute	2711P, 2711PC
Temperature, operating	0...55 °C (32...131 °F)
Temperature, nonoperating	-25...70 °C (-13...158 °F)
Heat dissipation 400, 600 700, 1000, 1250, 1500	85 BTU/hr 240 BTU /hr
Relative humidity	5...95% noncondensing
Vibration	10...57 Hz, 0.012 peak-to-peak displacement 57...500 Hz, 2 g peak acceleration
Altitude, operating	2000 m (6561 ft)
Shock, operating	15 g at 11 ms
Shock, nonoperating	30 g at 11 ms
Enclosure ratings 400 and 600 700 to 1500	NEMA/UL Type 12, 13, 4X (Indoor use only), and IEC IP66 NEMA/UL Type 12, 13, 4X (Indoor use only), and IEC IP54, IP65
Airborne contaminants	For PanelView Plus 6 conformal-coated PCBA level products with catalogs numbers ending in K, these apply: ANSI/ISA S71.04 - 1985 Severity Level G3 EN60654-4: 1998 Class 3

Certifications

The certifications in Table 2 apply to these PanelView Plus 6 terminals:

- PanelView Plus 6 - 700 to 1500 terminals including logic, communication modules, and display modules
- PanelView Plus 6 - 400 and 600 terminals
- PanelView Plus 6 Compact 400 and 600 terminals

Table 2 - Certifications - PanelView Plus 6 Terminals

Certification ⁽¹⁾	2711P, 2711PC
c-UL-us	cULus Listed Industrial Control Equipment for use in Hazardous Locations (E10314) per standards ANSI / ISA 12.12.01 and CSA C22.2 No. 213. rated: <ul style="list-style-type: none"> • Class I, Div 2, Groups A, B, C, D • Class I, Zone 2, Group IIC • Class II, Div 2 Groups F, G • Class III Hazardous Locations Enclosure type ratings per UL50 and CSA C22.2 No. 94.2-07.
CE (EMC)	European Union 2004/108/EC EMC Directive, compliant with: <ul style="list-style-type: none"> EN 61000-6-2; Industrial Immunity EN 61000-6-4; Industrial Emissions
CE (LVD)	European Union 2006/95/EC Low Voltage Directive, compliant with: <ul style="list-style-type: none"> EN 61131-2; Programmable Controllers
RMS or C-Tick	Certified <ul style="list-style-type: none"> Australian Radiocommunications Act, compliant with: AS/NZS CISPR 11; Industrial Emissions
RoHS	China RoHS, Turkey RoHS, European RoHS
KCC	Certificate of compliance
Marine ⁽²⁾	Components identified as marine-certified meet the requirements of one or more marine societies. For marine-certified components, refer to the Product Certification link below this table.

(1) When marked on product or otherwise declared. See the Product Certification link at <http://www.ab.com> for Declarations of Conformity, Certificates, and other certification details.

(2) The touch and combination keypad/touch versions of the 700 and 1000 display modules and all logic modules are marine certified.

PanelView Plus 6 - 700 to 1500 Terminals

The PanelView Plus 6 - 700 to 1500 terminals use modular components allowing for flexible configuration, installation, and upgrades. Factory-assembled terminals, with a display module and logic module, are available as a single catalog number or as separate components for field installation. Optional communication modules can be ordered for additional network communication.

The field-replaceable 6.5, 10.4, 12.1, and 15.1-in. flat-panel color displays come with keypad, touch screen, or keypad/touch-screen input. Other display options are available to meet more stringent environmental conditions:

- High-bright display module for outdoor applications
- Conformal-coated displays
- Marine-certified displays and logic modules
- Displays with built-in antiglare overlays

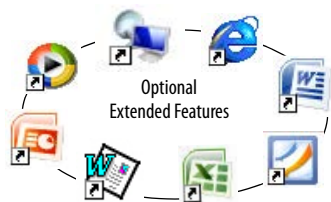


For a complete listing of catalog number selections, refer to the Visualization Solutions Selection Guide, publication [VIEW-SG001](#).

The high-performance logic module runs the Windows CE 6.0 operating system, allowing you to run HMI applications with the ability to also access the desktop. For users with more complex application requirements, the platform and logic module can be ordered with optional, extended features and file viewers.

Table 3 - Logic Module Features

Features	Description
High memory capacity	512 MB nonvolatile, 512 MB RAM
Power input	AC or DC
Network interface	For optional Ethernet, DH+™, DH-485, or ControlNet communication module
Communication ports	Ethernet, RS-232 serial
USB ports	<ul style="list-style-type: none"> • 2 USB host ports for connecting a USB mouse, keyboard, printer, and USB flash drives that are hot swappable • 1 USB device port for connecting a host personal computer
Secure Digital (SD) card slot	Hot-swappable card slot supports 1784-SDx SD cards for transferring files, upgrading firmware, or logging data
Operating system	<p>All terminals run the Windows CE 6.0 operating system (OS) providing OS functionality needed for most users needs:</p> <ul style="list-style-type: none"> • FTP server • VNC client/server • PDF reader • Active X controls • Third-party device support <p>Additional functionality is available by ordering terminals with optional, extended features:</p> <ul style="list-style-type: none"> • Internet Explorer web browser • Remote desktop connection • Media player • Microsoft file viewers for PowerPoint, Excel, and Word • WordPad text editor
FactoryTalk View software	<ul style="list-style-type: none"> • FactoryTalk View Machine Edition Station runtime, version 6.0 or later, is preloaded and activated on each terminal • Single license support for FactoryTalk ViewPoint software, version 1.2 or later, gives remote users access to a terminal's displays via standard web browser • HMI applications are developed with FactoryTalk View Studio for Machine Edition software, which is purchased separately
Reset and default switches	Provide easy access to diagnostic and repair operations



Technical Specifications

Table 4 - Technical Specifications - PanelView Plus 6 - 700 to 1500 Terminals

Attribute	700 Color ⁽²⁾		1000 Color ⁽²⁾		1250 Color ⁽²⁾		1500 Color ⁽²⁾	
	2711P-K7C4Dx, 2711P-T7C4Dx, 2711P-B7C4Dx, 2711P-K7C4Ax, 2711P-T7C4Ax, 2711P-B7C4Ax		2711P-K10C4Dx, 2711P-T10C4Dx, 2711P-B10C4Dx, 2711P-K10C4Ax, 2711P-T10C4Ax, 2711P-B10C4Ax		2711P-K12C4Dx, 2711P-T12C4Dx, 2711P-B12C4Dx, 2711P-K12C4Ax, 2711P-T12C4Ax, 2711P-B12C4Ax		2711P-K15C4Dx, 2711P-T15C4Dx, 2711P-B15C4Dx, 2711P-K15C4Ax, 2711P-T15C4Ax, 2711P-B15C4Ax	
Operator input	Keypad, Touch, or Key/Touch		Keypad, Touch, or Key/Touch		Keypad, Touch, or Key/Touch		Keypad, Touch, or Key/Touch	
Display type	Color active-matrix TFT		Color active-matrix TFT		Color active-matrix TFT		Color active-matrix TFT	
Display size	6.5 in.		10.4 in.		12.1 in.		15 in.	
Display area (WxH)	132 x 99 mm (5.2 x 3.9 in.)		211 x 158 mm (8.3 x 6.2 in.)		246 x 184 mm (9.7 x 7.2 in.)		304 x 228 mm (12.0 x 9.0 in.)	
Resolution	640 x 480, 18-bit color graphics				800 x 600, 18-bit color graphics		1024 x 768, 18-bit color graphics	
Luminance	300 cd/m ² Nits				300 cd/m ² Nits ⁽³⁾			
Backlight	CCFL, 50,000 hours min at 25 °C (77 °F), field replaceable Backlight for 1250 high-bright display module is not replaceable							
Touch screen	8-wire analog resistive Actuation: 1 million presses; operating force: 10...110 g							
Keypad description	Stainless-steel membrane Numeric, navigation, and function keys Actuation: 1 million presses; operating force: 340 g							
Keypad function keys	22 function keys F1...F10 and K1...K12		32 function keys F1...F16 and K1...K16		40 function keys F1...F20 and K1...K20		40 function keys F1...F20 and K1...K20	
Battery (real-time clock)	Battery-backed clock timestamps critical data, accuracy is ±2 minutes per month Battery life: 4 year min. @ 25 °C (77 °F) Field-replaceable: cat. no. 2711P-RY2032 or equivalent CR2032 coin-cell lithium battery							
Memory	512 MB nonvolatile, 512 MB RAM							
External storage	Secure Digital (SD) card, cat. no.1784-SDx, supported by hot-swappable SD card slot USB flash drives supported by high-speed, hot-swappable, 2.0 USB host ports							
Operating system	Windows CE 6.0 operating system with or without extended features and Microsoft Office file viewers							
Software	FactoryTalk View Machine Edition software, version 6.0 or later FactoryTalk ViewPoint software, version 1.2 or later							
Communication ports	Ethernet (10/100 Mbps, Auto-MDI/MDI-X), RS-232, (2) USB host, (1) USB device Network interface for optional Ethernet, DH+/DH-485, or ControlNet (scheduled or unscheduled) communication module							
Input voltage, DC	18...32V DC (24V DC nom)							
Power consumption, DC	70 W max (2.9 A at 24V DC), 39 W typical (1.6 A at 24V DC)							
External power supply	Cat. no. 2711P-RSACDIN, safety extra-low voltage (SELV) or protective extra-low voltage power supply for 700 to 1500 DC-powered terminals; 85...264V AC, 120VA max							
Input voltage, AC	85...264V AC, 47...63 Hz							
Power consumption, AC	160VA max, 65VA typical							
Weight, approx ⁽¹⁾	Keypad: 1.8 kg (4.1 lb) Touch: 1.7 kg (3.7 lb)		Keypad: 2.8 kg (6.2 lb) Touch: 2.5 kg (5.6 lb)		Keypad: 3.4 kg (7.5 lb) Touch: 3.2 kg (7.0 lb)		Keypad: 4.5 kg (9.9 lb) Touch: 4.2 kg (9.2 lb)	
Dimensions (HxWxD), approx ⁽¹⁾	Keypad: 193 x 290 x 55 mm 7.58 x 11.40 x 2.18 in. Touch: 179 x 246 x 55 mm 7.04 x 9.68 x 2.18 in.		Keypad: 248 x 399 x 55 mm 9.77 x 15.72 x 2.18 in. Touch: 248 x 329 x 55 mm 9.77 x 12.97 x 2.18 in.		Keypad: 282 x 416 x 55 mm 11.12 x 16.36 x 2.18 in. Touch: 282 x 363 x 55 mm 11.12 x 14.30 x 2.18 in.		Keypad: 330 x 469 x 65 mm 12.97 x 18.46 x 2.55 in. Touch: 330 x 416 x 65 mm 12.97 x 16.37 x 2.55 in.	
Cutout dimensions (HxWxD)	Keypad: 167 x 264 mm 6.57 x 10.39 in. Touch: 154 x 220 mm 6.08 x 8.67 in.		Keypad: 224 x 375 mm 8.8 x 14.75 in. Touch: 224 x 305 mm 8.8 x 12.0 in.		Keypad: 257 x 390 mm 10.11 x 15.35 in. Touch: 257 x 338 mm 10.11 x 13.29 in.		Keypad: 305 x 419 mm 12.0 x 16.5 in. Touch: 305 x 391 mm 12.0 x 15.4 in.	

(1) Weights and dimensions do not include the communication module. Add 95 g (0.21 lb) to the weight for a communication module.

(2) Replace x in catalog number with an 8 or 9. For catalog numbers ending in 9, the Windows CE operating system includes extended features and file viewers; catalog numbers ending in 8 do not support these features.

(3) The 1250 high-bright display module, cat. no. 2711P-RDT12H, for outdoor operations, has a luminance of 1000 cd/m² Nits. The backlight is not replaceable.

Terminal Dimensions

Table 5 provides overall dimensions and cutout dimensions for the PanelView Plus 6 - 700 to 1500 terminals. The 1000 touch or keypad terminal is shown for reference. Other models look similar.

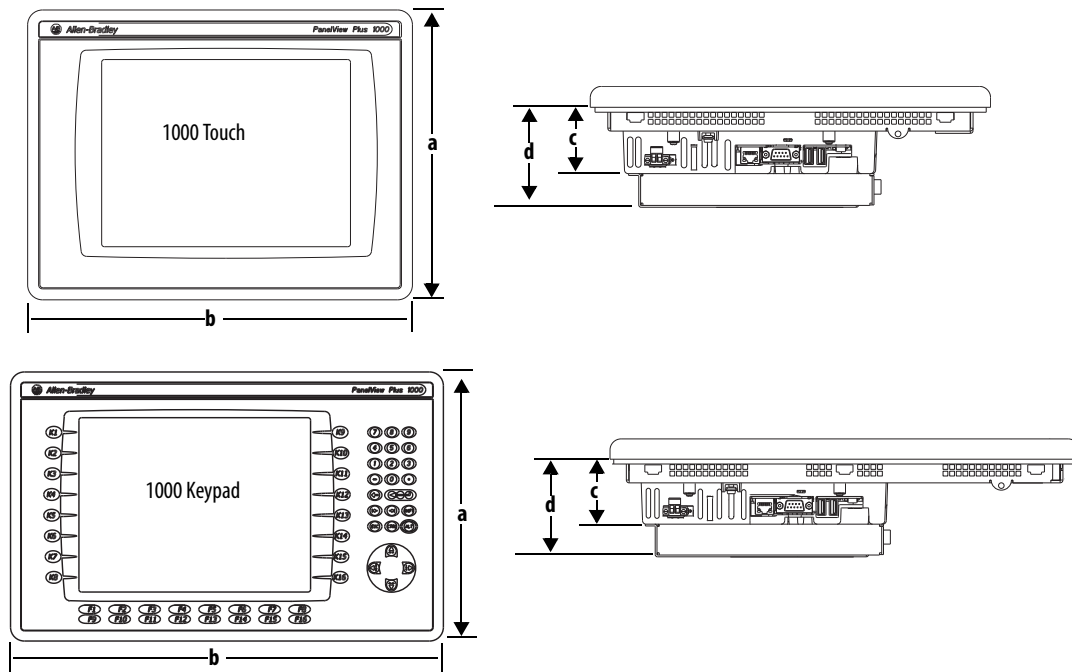


Table 5 - PanelView Plus 6 - 700 to 1500 Terminal Dimensions

Terminal	Input Type	Height (a) mm (in.)	Width (b) mm (in.)	Depth (c) Display to Logic Module mm (in.)	Depth (d) Display to Communication Module mm (in.)	Cutout Height mm (in.)	Cutout Width mm (in.)
700	Keypad or keypad/touch	193 (7.58)	290 (11.40)	55 (2.18)	83 (3.27)	167 (6.59)	264 (10.39)
	Touch	179 (7.04)	246 (9.68)	55 (2.18)	83 (3.27)	154 (6.08)	220 (8.67)
1000	Keypad or keypad/touch	248 (9.77)	399 (15.72)	55 (2.18)	83 (3.27)	224 (8.8)	375 (14.75)
	Touch	248 (9.77)	329 (12.97)	55 (2.18)	83 (3.27)	224 (8.8)	305 (12.00)
1250	Keypad or keypad/touch	282 (11.12)	416 (16.36)	55 (2.18)	83 (3.27)	257 (10.11)	390 (15.35)
	Touch	282 (11.12)	363 (14.30)	55 (2.18)	83 (3.27)	257 (10.11)	338 (13.29)
	Touch (high-bright display)	282 (11.12)	363 (14.30)	74 (2.9)	101 (3.99)	257 (10.11)	338 (13.29)
1500	Keypad or keypad/touch	330 (12.97)	469 (18.46)	65 (2.55)	93 (3.65)	305 (12.00)	419 (16.50)
	Touch	330 (12.97)	416 (16.37)	65 (2.55)	93 (3.65)	305 (12.00)	391 (15.40)

PanelView Plus 6 - 400 and 600 Terminals

The next generation PanelView Plus 6 - 400 and 600 terminals combine the display, logic, communication, and power into one base unit:

- The 400 model has a 3.5-in. color graphic display with keypad or combination key and touch input, or a grayscale display with keypad input.
- The 600 model has a 5.7-in. color or grayscale graphic display with keypad, touch screen, or combination keypad/touch-screen input.



For a complete listing of catalog number selections, refer to the Visualization Solutions Selection Guide, publication [VIEW-SG001](#).

This new generation of terminals runs Windows CE 6.0 operating system similar to the 700 to 1500 terminals. The terminals run HMI applications but also provide the ability to access the desktop. For users with more complex application requirements, the 600 color terminals can be ordered with optional, extended features and file viewers.

Table 6 - Terminal Features

Features	Description
High memory capacity	512 MB nonvolatile, 256 MB RAM
Power input	AC or DC
Communication ports	Units are available with one of these communication options: <ul style="list-style-type: none"> • RS-232 • Ethernet and RS-232 Separate communication modules are not supported.
USB ports	<ul style="list-style-type: none"> • 1 USB host ports for connecting a USB mouse, keyboard, printer, and USB flash drives that are hot swappable • 1 USB device port for connecting a host personal computer
Secure Digital (SD) card slot	Hot-swappable card slot supports 1784-SDx SD cards for transferring files, upgrading firmware, or logging data
Operating system	All terminals run the Windows CE 6.0 operating system (OS) providing OS functionality needed for most users needs: <ul style="list-style-type: none"> • FTP server • VNC client/server • PDF reader • Active X controls • Third-party device support Additional functionality is available for the 600 terminals by ordering terminals with these optional, extended features: <ul style="list-style-type: none"> • Internet Explorer web browser • Media player • Microsoft file viewers for PowerPoint, Excel, and Word • WordPad text editor
FactoryTalk View software	<ul style="list-style-type: none"> • FactoryTalk View Machine Edition runtime, version 6.10 or later, is preloaded and activated on each terminal • HMI applications are developed with FactoryTalk View Studio for Machine Edition software, which is purchased separately
Reset and default switches	Provide easy access to diagnostic and repair operations



Technical Specifications

Table 7 - Technical Specifications - PanelView Plus 6 - 400 and 600 Terminals

Attribute	400 Grayscale 2711P-K4M5A8, 2711P-K4M5D8, 2711P-K4M20A8, 2711P-K4M20D8	400 Color 2711P-K4C5A8, 2711P-B4C5A8, 2711P-K4C5D8, 2711P-B4C5D8, 2711P-K4C20A8, 2711P-B4C20A8, 2711P-K4C20D8, 2711P-B4C20D8	600 Grayscale 2711P-K6M5A8, 2711P-T6M5A8, 2711P-B6M5A8, 2711P-K6M5D8, 2711P-T6M5D8, 2711P-B6M5D8, 2711P-K6M20A8, 2711P-T6M20A8, 2711P-B6M20A8, 2711P-K6M20D8, 2711P-T6M20D8, 2711P-B6M20D8	600 Color ⁽¹⁾ 2711P-K6C5A8, 2711P-T6C5A8, 2711P-B6C5A8, 2711P-K6C5D8, 2711P-T6C5D8, 2711P-B6C5D8, 2711P-K6C20A8, 2711P-T6C20A8, 2711P-B6C20A8, 2711P-K6C20D8, 2711P-T6C20D8, 2711P-B6C20D8
Operator input	Keypad	Keypad or keypad/touch	Keypad, touch, or keypad/touch	Keypad, touch, or keypad/touch
Display type	Grayscale TFT LCD	Color active-matrix TFT	Grayscale TFT LCD	Color active-matrix TFT
Display size	3.5 in.	3.5 in.	5.7 in.	
Display area (WxH)	70 x 53 mm (2.8 x 2.3 in.)	70 x 53 mm (2.8 x 2.3 in.)	115 x 86 mm (4.5 x 3.4 in.)	115 x 86 mm (4.5 x 3.4 in.)
Resolution	320 x 240, 16-levels gray	320 x 240, 18-bit color graphics	320 x 240, 16-levels gray	320 x 240, 18-bit color graphics
Brightness	320 cd/m ² (Nits)	320 cd/m ² (Nits)	440 cd/m ² (Nits)	440 cd/m ² (Nits)
Backlight	White LED, not replaceable; 25,000 hours min at 25 °C (77 °F)		White LED, not replaceable; 25,000 hours min at 25 °C (77 °F)	
Touch screen	—	<ul style="list-style-type: none"> Analog resistive, 4-wire Actuation: 1 million presses Operating force: 10...110 g 	<ul style="list-style-type: none"> Analog resistive, 4-wire Actuation: 1 million presses Operating force: 10...110 g 	
Keypad description	<ul style="list-style-type: none"> Stainless-steel membrane Numeric, navigation, and function keys Actuation: 1 million presses; operating force: 340 g 		<ul style="list-style-type: none"> Stainless-steel membrane Numeric, navigation, and function keys Actuation: 1 million presses; operating force: 340 g 	
Keypad function keys	8 function keys (F1...F8)		10 function keys (F1...F10)	
Battery (real-time clock)	Battery-backed clock timestamps critical data, accuracy is ±2 minutes per month Battery life: 4 year min. @ 25 °C (77 °F) Field-replaceable: cat. no. 2711P-RY2032 or equivalent CR2032 coin-cell lithium battery			
System memory	256 MB RAM, 512 MB nonvolatile			
External storage	Secure Digital (SD) card, cat. no.1784-SDx, supported by hot-swappable SD card slot USB flash drive supported by high-speed, hot-swappable, 2.0 USB host port			
Operating system	Windows CE 6.0 operating system with or without extended features and Microsoft Office file viewers			Windows CE 6.0 operating system with extended features/file viewers
Software	FactoryTalk View Machine Edition software, version 6.10 or later; FactoryTalk ViewPoint software is not supported on the 400 and 600 terminals.			
Communication ports	<ul style="list-style-type: none"> RS-232, 1 USB host, 1 USB device port (catalog numbers with the number 5, for example, 2711P-B4C5D8) Ethernet (10/100 Mbps, Auto-MDI/MDI-X), RS-232, 1 USB host, 1 USB device port (catalog numbers with the number 20, for example, 2711P-B4C20D8) 			
Input voltage, DC	18...30V DC (24V DC nom)			
Power consumption, DC	15 W max (0.6 A at 24V DC), 9 W typical (0.375 A at 24V DC)			
External power supply	Cat. no. 2711P-RSACDIN, Class 2 safety extra-low voltage (SELV) or protective extra-low voltage (PELV) isolated power supply for non-isolated 400 and 600 DC-powered terminals; 85...264V AC, 120VA max			
Input voltage, AC	100...240V AC, 50...60 Hz			
Power consumption, AC	35VA max, 20VA typical			
Weight, approx	Keypad: 473 g (1.04 lb) Touch: —		Keypad: 728 g (1.60 lb) Touch: 594 g (1.31 lb)	
Dimensions (HxWxD), approx	Without AC module Keypad: 152 x 185 x 60 mm (6.0 x 7.28 x 2.35in.) With AC module 152 x 185 x 90 mm (6.0 x 7.28 x 3.54 in.) Without AC module Touch: — With AC module —		Keypad: 167 x 266 x 68 mm (6.58 x 10.47 x 2.68 in.) 167 x 266 x 98 mm (6.58 x 10.47 x 3.86 in.) Touch: 152 x 185 x 68 mm (6.0 x 7.28 x 2.68 in.) 152 x 185 x 98 mm (6.0 x 7.28 x 3.86 in.)	
Cutout dimensions (HxW)	Keypad: 123 x 156 mm (4.86 x 6.15 in.) Touch: —		Keypad: 142 x 241 mm (5.61 x 9.50 in.) Touch: 123 x 156 mm (4.86 x 6.15 in.)	

(1) Replace x in the catalog number with an 8 or 9. For catalog numbers ending in 9, for example, 2711P-T6C20D9, the Windows CE operating system includes extended features and Microsoft Office file viewers; catalog numbers ending in 8, for example, cat. not. 2711P-T6C20D8, do not support extended features and file viewers.

Terminal Dimensions

Table 8 provides overall dimensions and cutout dimensions for the PanelView Plus 6 - 400 and 600 terminals.

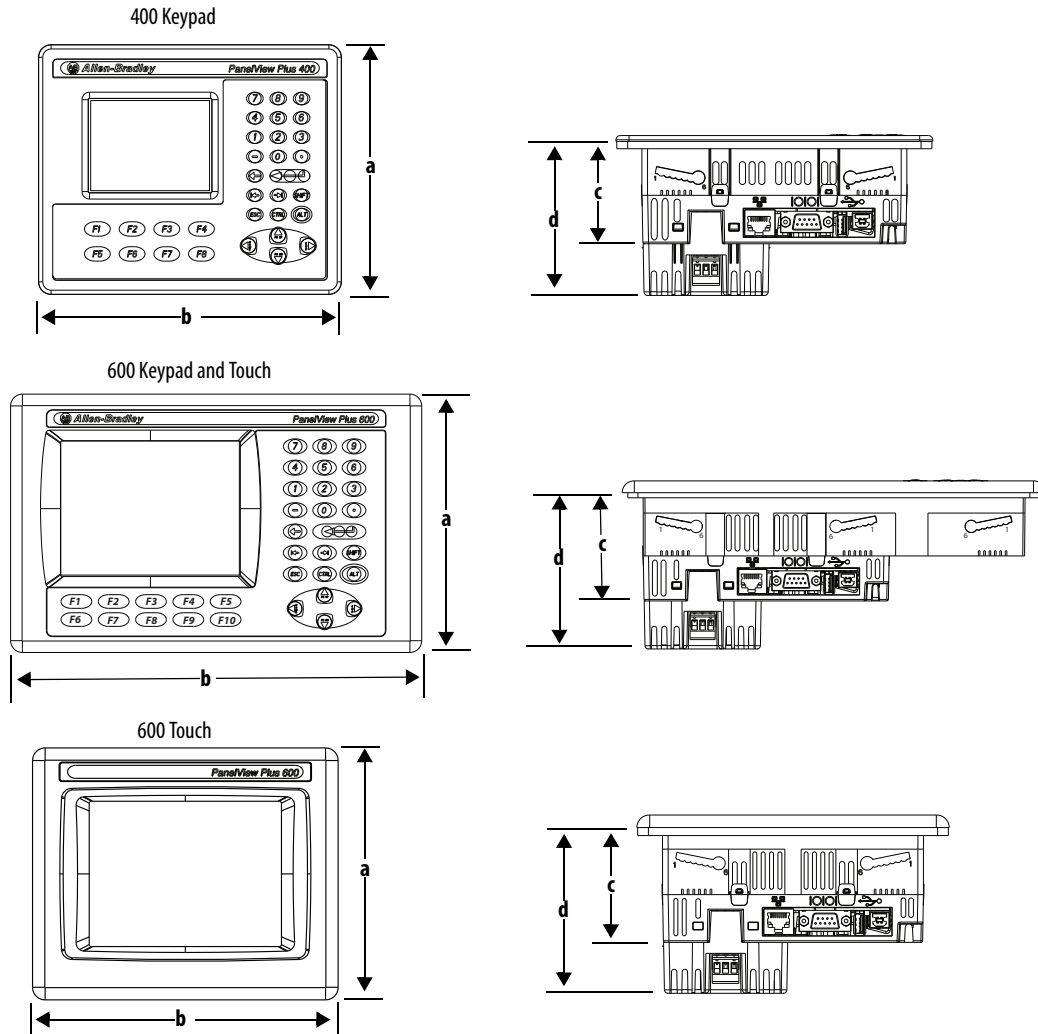


Table 8 - PanelView Plus 6 - 400 and 600 Product Dimensions

Terminal	Input Type	Height (a) mm (in.)	Width (b) mm (in.)	Depth (c) mm (in.)	Depth (d) with AC module mm (in.)	Panel Cutout Width mm (in.)	Panel Cutout Height mm (in.)
400	Keypad or keypad/touch	152 (6.0)	185 (7.28)	60 (2.35)	90 (3.54)	156 (6.15)	123 (4.86)
600	Keypad or keypad/touch	167 (6.58)	266 (10.47)	68 (2.68)	98 (3.86)	241 (9.50)	142 (5.61)
	Touch	152 (6.0)	185 (7.28)	68 (2.68)	98 (3.86)	156 (6.15)	123 (4.86)

PanelView Plus 6 Compact Terminals

The PanelView Plus 6 Compact 400 and 600 terminals provide a solution for midsize applications requiring fewer displays and alarms in a FactoryTalk View ME application. These terminals are a subset of the PanelView Plus 6 family with selective hardware and software functionality. They are the preferred HMI solution for many of the CompactLogix™ controllers.



These are the major features of the PanelView Plus 6 Compact terminals:

- Preferred HMI for CompactLogix controllers
- RS-232 serial port, Ethernet port, USB port, DC power input, and Secure Digital (SD) card slot
- Serial and Ethernet communication only
- Connection to a single controller by using either RSLinx® Enterprise software, version 5.51 or later, or KEPServer software
- 25 displays and 200 alarm messages supported in the FactoryTalk View Compact Machine Edition application and runtime software
- Fixed hardware configurations without the addition or replacement of modular components

For a complete listing of catalog number selections, refer to the Visualization Solutions Selection Guide, publication [VIEW-SG001](#).

Technical Specifications

Table 9 - Technical Specifications - PanelView Plus 6 Compact Terminals

Attribute	400 Grayscale 2711PC-K4M20D8	400 Color 2711PC-B4C20D8	600 Grayscale 2711PC-T6M20D8	600 Color 2711PC-T6C20D8
Operator input	Keypad	Keypad and touch	Touch	Touch
Display type	Grayscale TFT LCD	Color Active-matrix TFT	Grayscale TFT LCD	Color Active-matrix TFT
Display size	3.5 in.	3.5 in.	5.7 in.	5.7 in.
Display area (WxH)	70 x 53 mm (2.8 x 2.3 in.)	70 x 53 mm (2.8 x 2.3 in.)	115 x 86 mm (4.5 x 3.4 in.)	115 x 86 mm (4.5 x 3.4 in.)
Resolution	320 x 240, 16-levels gray	320 x 240, 18-bit color	320 x 240, 16-levels gray	320 x 240, 18-bit color
Luminance	320 cd/m ² (Nits)	320 cd/m ² (Nits)	440 cd/m ² (Nits)	440 cd/m ² (Nits)
Backlight	White LED, not replaceable; 25,000 hours min at 25 °C (77 °F)		White LED, not replaceable; 25,000 hours min at 25 °C (77 °F)	
Touch screen	—	Analog resistive 4-wire; actuation 1 million presses; operating force 10...110 g		
Keypad description	<ul style="list-style-type: none"> Stainless-steel membrane Numeric, navigation, and function keys Actuation: 1 million presses; operating force: 340 g 		—	
Keypad function keys	8 function keys (F1...F8)		—	—
Battery (real-time clock)	Battery-backed clock timestamps critical data, accuracy is ±2 minutes per month Battery life: 4 year min. @ 25 °C (77 °F) Field-replaceable: cat. no. 2711P-RY2032 or equivalent CR2032 coin-cell lithium battery			
Memory	256 MB RAM, 512 MB nonvolatile			
External storage	Secure Digital (SD) card, cat. no.1784-SDx, supported by hot-swappable SD card slot USB flash drive supported by high-speed, hot-swappable, 2.0 USB host port			
Operating system	Windows CE 6.0 operating system without extended features and Microsoft Office file viewers			
Software	FactoryTalk View Machine Edition software, version 6.10 or later; FactoryTalk ViewPoint software is not supported			
Communication ports	Ethernet (10/100 Mbps, Auto-MDI/MDI-X), RS-232, 1 USB host, and 1 USB device port			
Input voltage, DC	18...30V DC (24V DC nom)			
Power consumption, DC	15 W max (0.6 A at 24V DC), 9 W typical (0.375 A at 24V DC)			
External power supply	Cat. no. 2711P-RSACDIN, Class 2 safety extra-low voltage (SELV) or protective extra-low voltage (PELV) isolated power supply; 85...264V AC, 120VA max			
Weight, approx	473 g (1.04 lb)	473 g (1.04 lb)	594 g (1.31 lb)	594 g (1.31 lb)
Dimensions (HxWxD), approx	152 x 185 x 60 mm 6.0 x 7.28 x 2.35in.	152 x 185 x 60 mm 6.0 x 7.28 x 2.35in.	152 x 185 x 68 mm 6.0 x 7.28 x 2.86 in.	152 x 185 x 68 mm 6.0 x 7.28 x 2.86 in.
Cutout dimensions (HxWxD)	123 x 156 mm 4.86 x 6.15 in.	123 x 156 mm 4.86 x 6.15 in.	123 x 156 mm 4.86 x 6.15 in.	123 x 156 mm 4.86 x 6.15 in.

External Power Supply

This safety extra-low voltage (SELV) or protective extra-low voltage (PELV), 24V DC power supply can be used to power any of the PanelView Plus 6 terminals with a DC power input. This power supply provides protection so that under normal and single fault conditions, the voltage between conductors and earth ground does not exceed a safe value.

Table 10 - Environmental Specifications - 2711P-RSACDIN Power Supply

Attribute	2711P-RSACDIN
Temperature, operating IEC 60068-2-1 (Test Ad, Operating Cold) IEC 60068-2-2 (Test Bd, Operating Dry Heat) IEC 60068-2-14 (Test Nb, Operating Thermal Shock)	0...55 °C (32...131 °F)
Temperature, storage IEC 60068-2-1 (Test Ab, Unpackaged, Nonoperating Cold) IEC 60068-2-2 (Test Bb, Unpackaged, Nonoperating Dry Heat) IEC 60068-2-14 (Test Nb, Unpackaged, Nonoperating Thermal Shock)	-40...85 °C (-40...185 °F)
Relative humidity IEC 60068-2-30 (Test Db, Unpackaged, Nonoperating Damp Heat)	5...95% noncondensing
Vibration IEC 60068-2-6 (Test Fc, Operating)	5 g at 10...500 Hz
Shock, operating IEC 60068-2-27 (Test Ea, Unpackaged Shock)	15 g
Shock, nonoperating IEC 60068-2-27 (Test Ea, Unpackaged Shock)	30 g
ESD immunity IEC 61000-4-2	4 kV contact discharges 8 kV air discharges
Radiated RF immunity IEC 61000-4-3	10V/m with 1 kHz sine-wave 80% AM from 30...1000 MHz
EFT/B immunity IEC 61000-4-4	±2 kV at 5 kHz on power ports
Surge transient immunity IEC 61000-4-5	±1 kV line-line (DM) and ±2 kV line-earth (CM) on AC power ports
Conducted RF immunity IEC 61000-4-6	10V rms with 1 kHz sine wave 80% AM from 150 kHz...80 MHz
Enclosure type rating	None (open-style)
Power conductors	Wire size 12 gauge (4 mm ²) max solid or stranded copper wire rated at 75 °C (167 °F) or greater 1.2 mm (3/64 in.) insulation max Category 1 ⁽¹⁾

(1) Use this conductor capacity information for planning conductor routing. Refer to Industrial Automation Wiring and Grounding Guidelines, publication [1770-4.1](#).

Table 11 - Certifications - 2711P-RSACDIN Power Supply

Certification ⁽¹⁾	2711P-RSACDIN
c-UL-us	UL Listed Industrial Control Equipment, certified for US and Canada. See UL File E10314. UL Listed for Class, Division 2 Groups A, B, C, and D for US and Canada.
CE	European Union 89/336/EEC EMC Directive, compliant with: <ul style="list-style-type: none"> EN 61000-6-2; Industrial Immunity EN 61326, Meas./Control/Lab., Industrial Requirements EN 61000-6-4; Industrial Emissions European Union 73235/EEC Low Voltage Directive, compliant with: <ul style="list-style-type: none"> EN 61131-2; Programmable Controllers
C-Tick	Australian Radiocommunications Act, compliant with: AS/NZS 2064, Industrial Emissions

(1) When marked. See the Product Certification link at <http://www.ab.com> for Declarations of Conformity, Certificates, and other certification details.

Table 12 - Technical Specifications - 2711P-RSACDIN Power Supply

Attribute	2711P-RSACDIN
Input Specifications	
Supply voltage, nom	120V AC, 47...63 Hz, 1.7 A max 230V AC, 47...63 Hz, 1.1 A max
Voltage range	85...265V AC
Inrush current	40 A typical, 1 AC cycle at V_{in} 265V AC, 55 °C (131 °F)
Interruption	Output voltage will stay within specification when input drops out for 1/2 cycle at 47 Hz, 85V AC with max load
Output Specifications	
Output voltage, nom	+24V DC safety extra-low voltage (SELV)
Voltage range	20.4...27.6V DC, includes noise and 5% AC ripple
Inrush current	40 A typical, 1 AC cycle at V_{in} 265V AC, 55 °C (131 °F)
Minimum load	50 mA
Overvoltage protection	Output internally limited to 35V DC. Cycle power to re-energize.
Overcurrent protection	Current limit 3.2 A min (107% min)
Leakage current	0.5 mA rms max at rated input and output
Isolation voltage	2830V DC for 1 second

Table 13 - Dimensions - 2711P-RSACDIN Power Supply

Attribute	2711P-RSACDIN
Mounting	<ul style="list-style-type: none"> • Horizontal on a DIN rail • Wall or panel mount with cat. no. 1794-NM1 panel mounting kit
Terminal screw torque	0.5...0.6 N·m (5...7 lb·in)
Dimensions (HxWxD), approx	87 x 68 x 69 mm (3.4 x 2.7 x 2.7 in.)

HMI Software

All PanelView Plus 6 terminals are configured with FactoryTalk View Studio software and have an integrated runtime system called FactoryTalk View Machine Edition Station.

Machine Edition Station runs projects developed with FactoryTalk View Studio software and is included on all PanelView Plus 6 terminals.

Two versions of FactoryTalk View Studio software support application development for PanelView Plus 6 terminals.

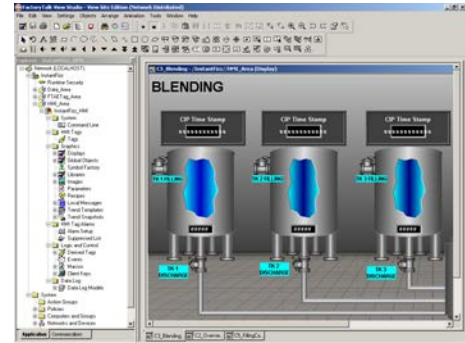


Table 14 - HMI Software for PanelView Plus 6 Terminals

Cat. No. ⁽¹⁾	Description
9701-VWSTMENE	FactoryTalk View Studio for Machine Edition software - Configuration software for developing and testing machine level human machine interface (HMI) applications. Includes RSLinx Enterprise and KEPServer Enterprise software.
9701-VWSTENE	FactoryTalk View Studio software - Configuration software for developing and testing machine level and supervisory level human machine interface (HMI) applications.

(1) Order localized versions of the software by replacing EN in the catalog number with DE for German, FR for French, JP for Japanese, or ZH for Chinese.

You can import PanelView Standard/PanelBuilder™32 and PanelView e applications into FactoryTalk View Studio software as Machine Edition applications by using the Machine Edition Import Wizard. The Import Wizard steps you through a few options such as scaling to a new screen resolution size, and then converts objects, text, tags, and communication configurations to ones that are available in Machine Edition.



FactoryTalk ViewPoint software, an add-on to FactoryTalk View Studio software, allows plant managers, production supervisors, system integrators, and other key stakeholders to view and control real-time plant floor operations remotely from a web browser. FactoryTalk ViewPoint enabled displays are fully scalable and animated in the browser. The remote user can also view displays that are not the active display of the terminal.

Each PanelView Plus 6 - 700 to 1500 terminal contains one license supporting a single client connection to the terminal. No additional software is required. FactoryTalk ViewPoint software is not supported by the PanelView Plus 6 - 400 and 600 terminals.

For a complete list of available HMI software, visit <http://www.rockwellautomation.com/rockwellsoftware>.

Communication Cables

Tables 15...18 list runtime cables for PanelView Plus 6 (400, 600, 700, 1000, 1250, 1500) terminals. The PanelView Plus 6 Compact terminals use the same cables as the PanelView Plus 6 - 400 and 600 terminals.

All PanelView Plus 6 terminals use a standard Ethernet cable for application transfers between a computer and the terminal.

Table 15 - Communication Cables: PanelView Plus 6 Terminals to SLC Controllers

Protocol	PanelView Plus 6 Comm Port 400, 600, 700, 1000, 1250, 1500	SLC™ 500, 5/01, 5/02 CH1 RJ45 (DH-485)	SLC 5/03, 5/04, 5/05 CH0 (9-pin RS-232) (DF1 or DH-485)	SLC 5/03 CH1 (RJ45) (DH-485)	SLC 5/04 CH1 (DH+)	SLC 5/05 CH1 (ENET)
DF1	RS-232 port All terminals	—	2711-NC13 (5 m/16 ft) 2711-NC14 (10 m/32 ft)	—	—	—
DH-485	RS-232 port All terminals	Use AIC+ module (1761-NET-AIC) to connect to port 1 or 2	2711-NC13 (5 m/16 ft) 2711-NC14 (10 m/32 ft)	Use AIC+ Module (1761-NET-AIC) to connect to port 1 or 2	—	—
	DH-485 port 700 to 1500 terminals only Requires 2711P-RN6 or 2711P-RN6K	1761-CBL-AS03 (3 m/10 ft) 1761-CBL-AS09 (9 m/30 ft)	Use AIC+ module (1761-NET-AIC) to connect to Port 3	1761-CBL-AS03 (3 m/10 ft) 1761-CBL-AS09 (9 m/30 ft)	—	—
EtherNet/IP	EtherNet/IP port All terminals 2711P-RN20 provides second Ethernet port on 700 to 1500 terminals only	—	Use 1761-NET-ENI module with Ethernet cable	—	—	1585J-M type cable or 2711P-CBL-EX04 (4 m/14 ft)
ControlNet	ControlNet port 700 to 1500 terminals only Requires 2711P-RN155 or 2711P-RN155K	—	—	—	—	—
DH+	700 to 1500 terminals only Requires 2711P-RN6 or 2711P-RN6K	—	—	—	shielded twiaxial cable (1770-CD)	—

Table 16 - Communication Cables: PanelView Plus 6 Terminals to PLC-5 and MicroLogix Controllers

Protocol	PanelView Plus 6 Comm Port 400, 600, 700, 1000, 1250, 1500	PLC-5® , PLC-5C, PLC-5E CH0 (25-pin RS-232) (DF1)	MicroLogix™ 1400, 1500LRP CH1/CH2 (9-pin RS-232) (DF1 or DH-485)	MicroLogix 1000, 1100, 1200, 1400, 1500LSP CH0 (8-pin Mini DIN) (DF1 or DH-485)	MicroLogix 1100, 1400 Ethernet
DF1	RS-232 port All terminals	2711-NC13 (5 m/16 ft) 2711-NC14 (10 m/32 ft) (9-to-25 pin adapter required)	2711-NC13 (5 m/16 ft) 2711-NC14 (10 m/32 ft)	2711-NC21 (5 m/16 ft) 2711-NC22 (15 m/49 ft) ⁽¹⁾	—
DH-485	RS-232 port All terminals	—	2711-NC13 (5 m/16 ft) 2711-NC14 (10 m/32 ft)	2711-NC21 (5 m/16 ft) 2711-NC22 (15 m/49 ft)	—
	DH-485 port 700 to 1500 terminals only Requires 2711P-RN6 or 2711P-RN6K	—	—	Use AIC+ module (1761-NET-AIC) to connect to Port 3	—
EtherNet/IP	EtherNet/IP port All terminals 2711P-RN20 provides second Ethernet port on 700 to 1500 terminals only	To PLC-5E with 1585J-M type cable or 2711P-CBL-EX04 (4 m/14 ft)	Use 1761-NET-ENI module with Ethernet cable		1585J-M type cable or 2711P-CBL-EX04 (4 m/14 ft)
ControlNet	ControlNet port 700 to 1500 terminals only Requires 2711P-RN155 or 2711P-RN155K	To PLC-5C with ControlNet cable	—	—	—
DH+	DH+ port 700 to 1500 terminals only Requires 2711P-RN6 or 2711P-RN6K	Shielded twiaxial cable (1770-CD)	—	—	—

(1) The AIC+ module is recommended for isolation purposes when the terminal and controller are not on same power supply.

Table 17 - Communication Cables: PanelView Plus 6 Terminals to Logix Controllers

Protocol	PanelView Plus 6 Comm Port 400, 600, 700, 1000, 1250, 1500	ControlLogix® CHO (9-pin RS-232) (DF1)	CompactLogix CHO (9-pin RS-232) (DF1 or DH-485)
DF1	RS-232 port All terminals		2711-NC13 (5 m/16 ft) 2711-NC14 (10 m/32 ft) 2706-NC13 (3 m/10 ft)
DH-485	RS-232 port All terminals	—	2711-NC13 (5 m/16 ft) 2711-NC14 (10 m/32 ft) 2706-NC13 (3 m/10 ft)
	DH-485 port 700 to 1500 terminals only Requires 2711P-RN6 or 2711P-RN6K	—	Use AIC+ module (1761-NET-AIC) to connect to port 3
ControlNet	ControlNet port 700 to 1500 terminals only Requires 2711P-RN15S or 2711P-RN15SK	Use 1756-CNB module with ControlNet cable	1769-L35CR, 1769-L32C, 1768-CNB, or 1768-CNBR with ControlNet cable
EtherNet/IP	EtherNet/IP port All terminals 2711P-RN20 provides second Ethernet port on 700 to 1500 terminals only	Use 1756-EN2T or 1756-ENBT module with 1585J-M type cable or 2711P- CBL-EX04 (4 m/14 ft)	To 1769-L35E, 1769-L23E, 1769-L32E, or 1768-ENBT module with 1585J-M type cable or 2711P- CBL-EX04 (4 m/14 ft)
DH+	DH+ port 700 to 1500 terminals only Requires 2711P-RN6 or 2711P-RN6K	Use 1756-DHRIO module with shielded twinaxial cable (1770-CD)	—

Table 18 - Communication Cables: PanelView Plus 6 Terminals to Interface Modules

Protocol	PanelView Plus6 Comm Port 400, 600, 700, 1000, 1250, 1500	1747-AIC	1761-NET-AIC			1761-NET-ENI
			Port 1 (9-pin)	Port 2 (8-pin Mini DIN)	Port 3 (DH-485)	Port 2 (8-pin Mini DIN)
DF1	RS-232 port (9-pin) All terminals	—	2711-NC13 (5 m/16 ft) 2711-NC14 (10 m/32 ft)	2711-NC21 (5 m/16 ft) 2711-NC22 (15 m/49 ft) Null modem required	—	1761-CBL-AP00 (5 m) 1761-CBL-PM02 (2 m) 2711-CBL-PM05 (5 m) 2711-CBL-PM10 (10 m)
DH-485	RS-232 port (9-pin) All terminals	—	2711-NC13 (5 m/16 ft) 2711-NC14 (10 m/32 ft)	2711-NC21 (5 m/16 ft) 2711-NC22 (15 m/49 ft) Null modem required	—	—
	DH-485 port 700 to 1500 terminals only Requires 2711P-RN6 or 2711P-RN6K	Direct connection to single AIC with Belden 9842 cable ⁽¹⁾	—	—	Direct connection to single AIC+ with Belden 9842 cable	—

(1) Use serial port on the PanelView Plus 6 terminal with an AIC+ module for a DH-485 network solution.

Migration Hardware

The PanelView Plus 6 platforms provide a clear migration path for replacing older terminals. When migrating to a new platform, consider both the display size and the unit size. PanelView Plus 6 terminals use the same panel cutouts as existing PanelView products, yet offer a larger display. For instance, a PanelView Plus 6, 1250 terminal with a 12.1-inch display fits into the same cutout as a PanelView 1000 or 1000e with a 10.4-inch display. When choosing a terminal with the same display size, adapter plates are used to adapt the cutout of the new terminal.

Refer to [Additional Resources on page 18](#) for publications that provide catalog number conversions and migration information for applications.

Table 19 - PanelView Plus 6 Replacement Terminals

PanelView Standard Terminal	PanelView Plus 6 Replacement Terminal	Adapter Plate Required	Adapter Plate Cat. No.
PanelView Standard 300 or 300 Micro	None available ⁽¹⁾	—	—
PanelView 550 or 600 touch	PanelView Plus 6 or PanelView Plus 6 Compact 400 keypad or keypad/touch PanelView Plus 6 or PanelView Plus 6 Compact 600 touch	No	—
PanelView 550 keypad PanelView 550 keypad/touch	PanelView Plus 6, 600 keypad or keypad/touch	No	—
	PanelView Plus 6 or PanelView Plus 6 Compact 400 keypad or keypad/touch PanelView Plus 6 or PanelView Plus 6 Compact 600 touch	Yes	2711P-RAK4
PanelView 600 keypad PanelView 600 keypad/touch	PanelView Plus 6, 600 keypad or keypad/touch	Yes	2711P-RAK6
	PanelView Plus 6, 700 keypad or keypad/touch	No	—
PanelView 900 keypad	PanelView Plus 6, 700 keypad or keypad/touch	Yes	2711P-RAK7
	PanelView Plus 6, 1000 keypad or keypad/touch	No	—
PanelView 900 touch	PanelView Plus 6, 700 touch	Yes	2711P-RAT7
	PanelView Plus 6 or PanelView Plus Compact 1000 touch	No	—
PanelView 1000, 1000e keypad	PanelView Plus 6, 1000 keypad or keypad/touch	Yes	2711P-RAK10
	PanelView Plus 6, 1250 keypad or keypad/touch	No	—
PanelView 1000, 1000e touch	PanelView Plus 6 or PanelView Plus Compact 1000 touch	Yes	2711P-RAT10
	PanelView Plus 6, 1250 touch	No	—
PanelView 1400 keypad	PanelView Plus 6, 1250 keypad or keypad/touch	Yes	2711P-RAK12S
	PanelView Plus 6, 1500 keypad or keypad/touch	No	—
PanelView 1400 touch	PanelView Plus 6, 1250 touch	Yes	2711P-RAT12S
	PanelView Plus 6, 1500 touch	No	—
PanelView 1400e keypad	PanelView Plus 6, 1500 keypad or keypad/touch ⁽²⁾	Yes	2711P-RAK15
	PanelView Plus 6, 1250 keypad or keypad/touch	Yes	2711P-RAK12E
PanelView 1400e touch	PanelView Plus 6, 1500 touch ⁽²⁾	Yes	2711P-RAT15
	PanelView Plus 6, 1250 touch	Yes	2711P-RAT12E
PanelView 1200, 1200e keypad	PanelView Plus 6, 1250 keypad ⁽²⁾	Yes	2711P-RAK12E
PanelView 1200, 1200e touch	PanelView Plus 6, 1250 touch ⁽³⁾	Yes	2711P-RAT12E2

(1) Replace the PanelView Standard 300 or 300 Micro with a PanelView Plus 6 - 400 keypad terminal by increasing the size of the current panel cutout.

(2) Adapter plate required for stud-mounted terminals.

(3) Requires modification of panel cutout.

Additional Resources

These documents contain additional information concerning related products from Rockwell Automation.

Resource	Description
Visualization Solutions Selection Guide, publication VIEW-SG001	Provides an overview of the visualization products including catalog number selections offered by Rockwell Automation.
PanelView 6 Terminals User Manual, publication 2711P-UM006	Provides information on how to install, configure, operate, and troubleshoot the PanelView Plus 6 (400, 600, 700, 1000, 1250, 1500) terminals.
PanelView Plus 6 Compact Terminals User Manual, publication 2711PC-UM002	Provides information on how to install, configure, operate, and troubleshoot the PanelView Plus 6 Compact terminals.
Industrial Automation Wiring and Grounding Guidelines, publication 1770-4.1	Provides general guidelines for installing a Rockwell Automation® industrial system.
Product Certifications website, http://www.ab.com	Provides declarations of conformity, certificates, and other certification details.

You can view or download publications at <http://www.rockwellautomation.com/literature/>. To order paper copies of technical documentation, contact your local Allen-Bradley distributor or Rockwell Automation sales representative.

Important User Information

Solid-state equipment has operational characteristics differing from those of electromechanical equipment. Safety Guidelines for the Application, Installation and Maintenance of Solid State Controls (publication [SGI-1.1](#) available from your local Rockwell Automation sales office or online at <http://www.rockwellautomation.com/literature/>) describes some important differences between solid-state equipment and hard-wired electromechanical devices. Because of this difference, and also because of the wide variety of uses for solid-state equipment, all persons responsible for applying this equipment must satisfy themselves that each intended application of this equipment is acceptable.

In no event will Rockwell Automation, Inc. be responsible or liable for indirect or consequential damages resulting from the use or application of this equipment.

The examples and diagrams in this publication are included solely for illustrative purposes. Because of the many variables and requirements associated with any particular installation, Rockwell Automation, Inc. cannot assume responsibility or liability for actual use based on the examples and diagrams.

No patent liability is assumed by Rockwell Automation, Inc. with respect to use of information, circuits, equipment, or software described in this manual.

Reproduction of the contents of this manual, in whole or in part, without written permission of Rockwell Automation, Inc., is prohibited.

Documentation Feedback

Your comments will help us serve your documentation needs better. If you have any suggestions on how to improve this document, complete this form, publication [RA-DU002](#), available at <http://www.rockwellautomation.com/literature/>.

Allen-Bradley, Integrated Architecture, PanelView, FactoryTalk, CompactLogix, ControlLogix, MicroLogix, RSLinx, DH+, SLC, PLC-5, Rockwell Software, LISTEN. THINK. SOLVE., and Rockwell Automation are trademarks of Rockwell Automation, Inc.

Trademarks not belonging to Rockwell Automation are property of their respective companies.

Rockwell Otomasyon Ticaret A.Ş., Kar Plaza İş Merkezi E Blok Kat:6 34752 İçerenköy, İstanbul, Tel: +90 (216) 5698400

www.rockwellautomation.com

Power, Control and Information Solutions Headquarters

Americas: Rockwell Automation, 1201 South Second Street, Milwaukee, WI 53204-2496 USA, Tel: (1) 414.382.2000, Fax: (1) 414.382.4444

Europe/Middle East/Africa: Rockwell Automation NV, Pegasus Park, De Kleetlaan 12a, 1831 Diegem, Belgium, Tel: (32) 2 663 0600, Fax: (32) 2 663 0640

Asia Pacific: Rockwell Automation, Level 14, Core F, Cyberport 3, 100 Cyberport Road, Hong Kong, Tel: (852) 2887 4788, Fax: (852) 2508 1846

Publication 2711P-TD005C-EN-P - April 2013

Supersedes Publication 2711P-TD005B-EN-P - December 2011

Copyright © 2013 Rockwell Automation, Inc. All rights reserved. Printed in the U.S.A.